



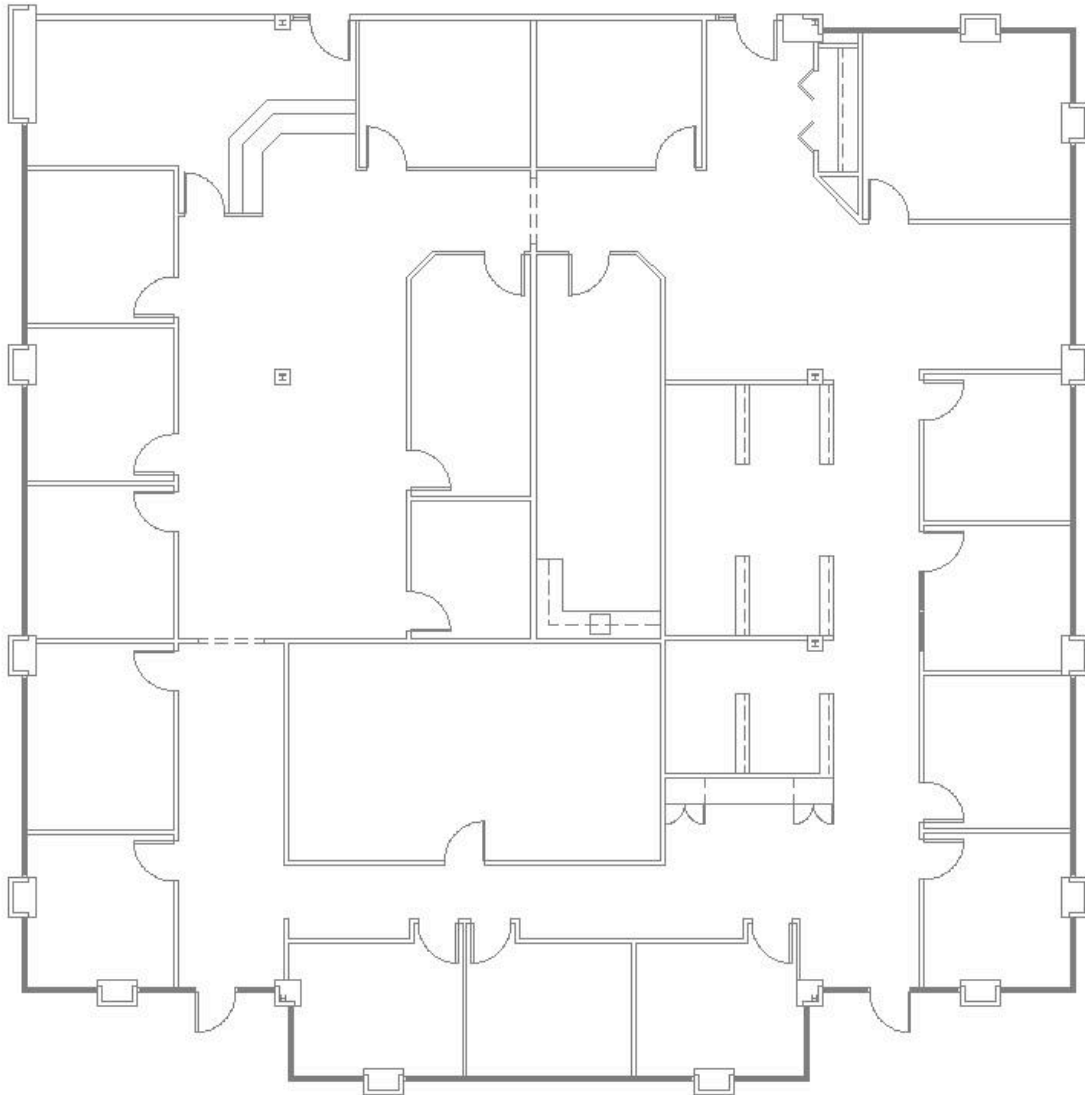
**CONSTRUCTION &
MANAGEMENT CO.**

COMMERCIAL & INDUSTRIAL
GENERAL CONTRACTORS

OFFICE SUITE FOR LEASE

I-96 OFFICE CENTER
33067 SCHOOLCRAFT RD LIVONIA
6,100 SQUARE FEET
35.51% OF BUILDING

MAY BE SPLIT 1,800/4,300 SQ. FEET



**Contact Shaw Construction & Management
Brennan Blackwell / Ted Barker (734) 425-6854**